

**Byrnes  
Entrance  
Technology**

*Formerly FRB Industries established 1981*

**CELEBRATING OVER 30 YEARS OF EXCELLENCE**

[www.byrneset.com.au](http://www.byrneset.com.au)



PROUDLY  
AustralianOwned

# BET2100 AUTOMATIC SLIDING DOOR OPERATOR

Certified by an independent NATA approved laboratory and tested to one million continuous cycles and fully compliant and accredited to AS5007



COMBI EMERGENCY EGRESS ENTRANCE



FRAMED AND GLAZED ENTRANCE



FRAMELESS GLASS ENTRANCE



SLIMLINE NARROW STILE ENTRANCE

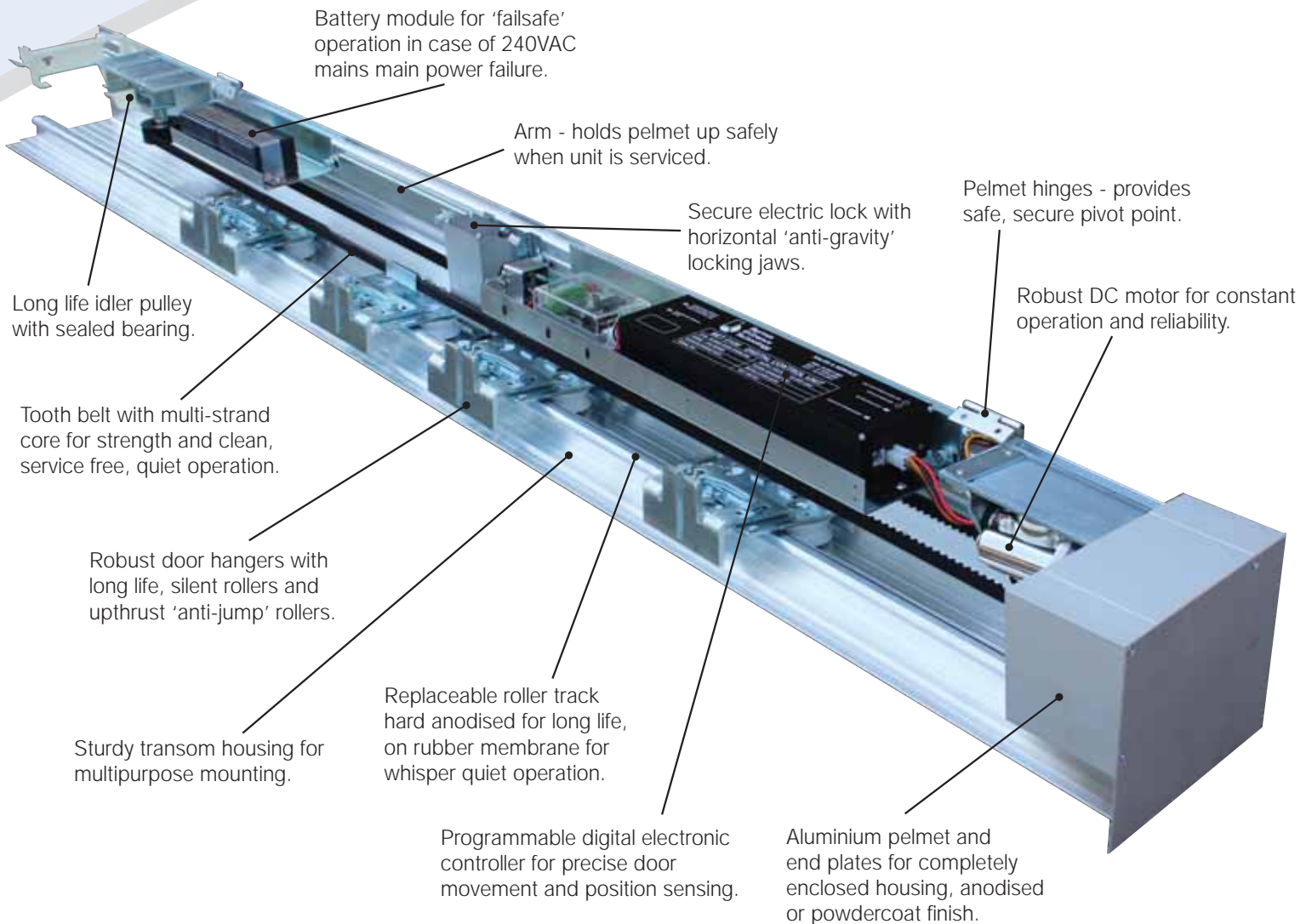
AUTOMATIC DOORS • AUTOMATIC GATES • REVOLVING DOORS • TURNSTILES • BOOMGATES

# BET2100 AUTOMATIC SLIDING DOOR OPERATOR

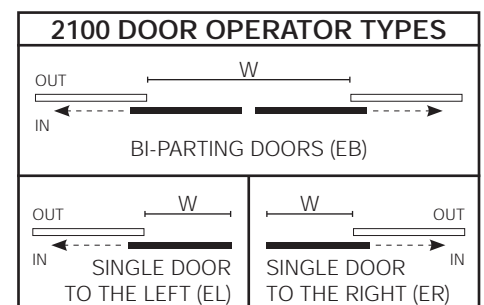


PROUDLY  
AustralianOwned

*BET2100 Door Operator is certified by an independent NATA approved laboratory and tested to one million continuous cycles and fully compliant and accredited to AS5007*



FOR APPLICATION SOLUTIONS AND  
TECHNICAL ADVICE CONTACT YOUR  
**BET** SALES REPRESENTATIVE



# DOOR ACTIVATION AND SAFETY ACCESSORIES

BET/02



BET/02/ECA



BET/03



BET/04



BET/04/ECA



BET/05



BET/07



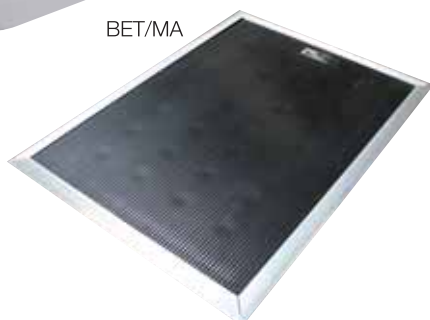
BET/08



BET/08/ECA



BET/MA



BET/13



## **BET/02 MOTION SENSOR**

Microwave technology, wide sensing field, wall, transom or pelmet surface mounting.  
Detection range (mm): up to 4000 wide x 2000 deep.  
Dimensions (mm): 120 wide x 80 high x 50 deep.  
Housing colours: Black, Grey or white.

## **BET/02/ECA MOTION SENSOR**

Microwave technology, wide sensing field, ceiling cavity flush mounting.  
Detection range (mm): up to 4000 wide x 2000 deep.  
Dimensions (mm): 190 diameter x 50 deep.  
Housing colour: White.

## **3BET/03 MOTION SENSOR**

Microwave technology, wide sensing field, wall, transom or pelmet surface mounting.  
Detection range (mm): up to 4000 wide x 2000 deep.  
Dimensions (mm): 160 wide x 48 high x 37 deep.  
Housing colours: Silver or Black.

## **BET/04 SAFETY PRESENCE SENSOR**

Active infrared technology, 2 curtains for presence detection, with 'Spotfinder' which identifies location of safety curtain, wall, transom or pelmet surface mounting.  
Presence detection (mm): up to 2000 wide x 350 deep.  
Dimensions (mm): 262 long x 55 high x 44 deep.  
Housing colour: Black.

## **BET/04/ECA SAFETY PRESENCE SENSOR**

Active infrared technology, 2 curtains for presence detection, with 'Spotfinder' which identifies location of safety curtain, ceiling cavity mounting.  
Mounting height (mm): up to 4000.  
Presence detection (mm): up to 2000 wide x 350 deep.  
Dimensions (mm): 360 long x 60 wide x 60 deep.  
Housing colour: White.

## **BET/05 NON-TOUCH PROXIMITY SENSOR**

Microwave technology, blue LED illuminates when activated, suitable for hospital sterile areas, food processing and pharmaceutical laboratories.  
Detection range (mm): 100 to 500, for movement at 90°.  
Dimensions (mm): 86 wide x 86 long x 13 high x 33 below surface flush mount or 50 high with surface mount box.  
Housing colour: White.

## **BET/07 COMBINED MOTION & SAFETY PRESENCE SENSOR**

Technology combining microwave activation and active infrared safety into one sensor, wall, transom or pelmet surface mounting.  
Motion detection range (mm): up to 4000 wide x 2000 deep.  
Presence detection (mm): up to 2000 wide x 670 deep.  
Dimensions (mm): 268 long x 60 high x 44 deep.  
Housing colour: Black.

## **BET/08 COMBINED MOTION & SAFETY PRESENCE SENSOR**

Combines microwave motion sensor and active infrared sensing technology in one housing, for unidirectional door opening and presence sensing, with 'Spotfinder' which identifies location of safety curtain, wall, transom or pelmet surface mounting.  
Motion detection range (mm): up to 4000 wide x 2000 deep.  
Presence detection (mm): up to 2000 wide x 350 deep.  
Dimensions (mm): 268 long x 58 high x 44 deep.  
Housing colour: Black.

## **BET/08/ECA COMBINED MOTION & SAFETY PRESENCE SENSOR**

Combines microwave motion sensor and active infrared sensing technology in one housing, for unidirectional door opening and presence sensing, with 'Spotfinder' which identifies location of safety curtain, for ceiling cavity flush mounting.  
Motion detection range (mm): up to 4000 wide x 2000 deep.  
Presence detection (mm): up to 2000 wide x 350 deep.  
Dimensions (mm): 360 long x 60 wide x 60 deep.  
Housing colour: White.

## **BET/MA ELECTRIC FLOOR MAT SWITCHES**

Fully moulded, hermetically sealed, with surface or flush mount trim, admissible intermittent load: 70kgs/cm<sup>2</sup>.  
Dimensions of exposed surface (mm): MA7010 = 700x1000, MA7014 = 700x1400, MA9010 = 900x1000, MA9014 = 900x1400.  
Colour: Black mat with clear anodised aluminium trim.

## **BET/13 WIRELESS TOUCH SWITCH**

Wireless transmitter technology that emits a signal to a frequency receiver which is installed within the door operator.  
Dimensions (mm): 39 wide x 184 long x 13 deep.  
Colour: Silver.



# DOOR ACTIVATION AND SAFETY ACCESSORIES

BET/14



BET/15



## **BET/14 EXIT PUSH BUTTON SWITCH (NARROW WIDTH)**

Green dome head push button switch, press to exit, with aluminium clear anodised mount plate, for wall, column or mullion mounting.  
Dimensions (mm): 40 wide x 96 long x 25 high x 30 below surface.

## **BET/15 EXIT PUSH BUTTON SWITCH (ILLUMINATED BUTTON)**

Push button with illuminated ring, press to exit, with stainless steel mount plate, for wall, column or mullion mounting.  
Dimensions (mm): 30 wide x 75 long x 5 high x 40 below surface.

BET/16



BET/16/LIW



BET/17



## **BET/16 KEYSWITCH (STANDARD)**

Impulse type keyswitch for secure activation of doors, with stainless steel mount plate for wall or mullion mounting, keyed to differ, not suitable for master keying.  
Dimensions: 40 wide x 65 long x 8 high x 45 below surface.

## **BET/16/LIW KEYSWITCH (FOR MASTER KEYING)**

OFF-ON two position keyswitch, with zinc cast satin chrome plated housing, for wall or mullion mounting, keyed to differ or suitable for master keying.  
Dimensions: 40 wide x 70 long x 20 high x 30 below surface.

## **BET/17 DIGITAL CODEPAD SWITCH (STANDARD)**

Digital code pad for secure access, without keys, surface mounting.  
Dimensions (mm): 76 wide x 120 high x 17 high.  
Colour: Off white.

BET/18



## **BET/18 DIGITAL CODEPAD SWITCH (VANDAL RESISTANT)**

Digital code pad for secure access, without keys, vandal resistant, weather resistant meets IP65, back lit, surface mounting.  
Dimensions (mm): 76 wide x 120 high x 22 high.  
Colour: Silver.



BET/20

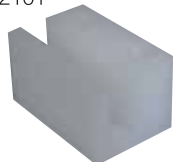
## **BET/20 PHOTO-ELECTRIC BEAMS**

Each set of photo-electric beams comprises transmitter cell and receiver cell; two sets must be used as a dual safety beams to comply with AS5007.  
Dimensions (mm): each cell 15 diameter x 3 high head x 13 diameter x 10 deep body, with leads.  
Colour: Black.

BET2100



BET2101



## **BET2100 FLOORGUIDE**

Suitable for framed and glazed aluminium, steel or timber sliding doors, black glass filled nylon housing with black rubber rollers.  
Dimensions (mm): 82 long x 32 wide x 37 high.

## **BET2101 FLOORGUIDE**

Suitable for frameless glass sliding doors, nylon material.  
Dimensions (mm): 80 long x 40 wide x 40 high.

BET2100/DFS



## **BET2100/DFS DOOR FUNCTION SWITCH (STANDARD WIDTH)**

Door control functions: NIGHT (Off) - EXIT - AUTO - HOLD OPEN, keyswitch, flush mount or surface mount using mount box.  
Dimensions (mm): 86 wide x 86 long x 10 high x 25 deep below mount surface if flush mount or 40 high with surface mount box.  
Housing colour: White.

BET2100/DFS/N



BET2100/ATD/ENTRY



## **BET2100/DFS/N DOOR FUNCTION SWITCH (NARROW WIDTH)**

Door control functions: NIGHT (Off) - EXIT - AUTO - HOLD OPEN, keyswitch, with aluminium anodised mount plate, for column or mullion mounting.  
Dimensions (mm): 44 wide x 86 long x 6 high x 30 below surface.

## **BET2100/ATD/ENTRY ACCESSIBLE TOILET ENTRY CONTROL PANEL**

Surface mount, with 'OPEN' Push button entry switch for activation of door to enter toilet, 'OCCUPIED' indicator illuminates when door is locked from inside.  
Optional: Override keyswitch (master keying by others) for door activation by authorised personnel for rescue purposes if door is locked from inside.  
Dimensions (mm): 157 long x 85 wide x 10 high x 50 below surface.  
Housing colour: White.

BET2100/ATD/EXIT



## **BET2100/ATD/EXIT ACCESSIBLE TOILET EXIT CONTROL PANEL**

Surface mount, with 'OPEN' Push button exit switch to open door when inside, 'LOCKED' indicator which illuminates when door is locked from inside and 'LOCK' push button switch to lock or unlock door when inside.  
Dimensions (mm): 225 wide x 85 long x 10 high x 50 below surface.  
Housing colour: White.

**BET2100 Automatic sliding door operators are compatible with access control systems, intercom systems, fire alarm systems, security alarm systems, card readers, remote hand held transmitters and other activation equipment.**

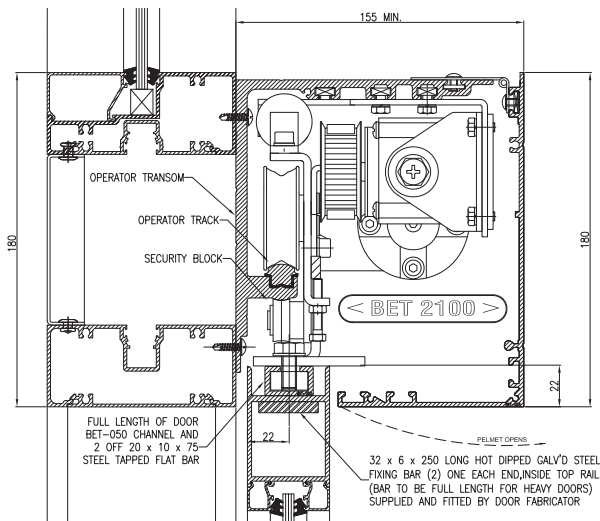


**Byrnes  
Entrance  
Technology**

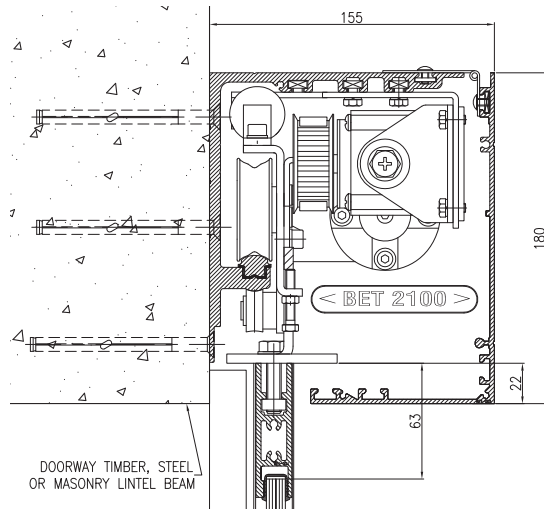
Formerly FRB Industries established 1981

# BET2100 AUTOMATIC SLIDING DOOR OPERATOR

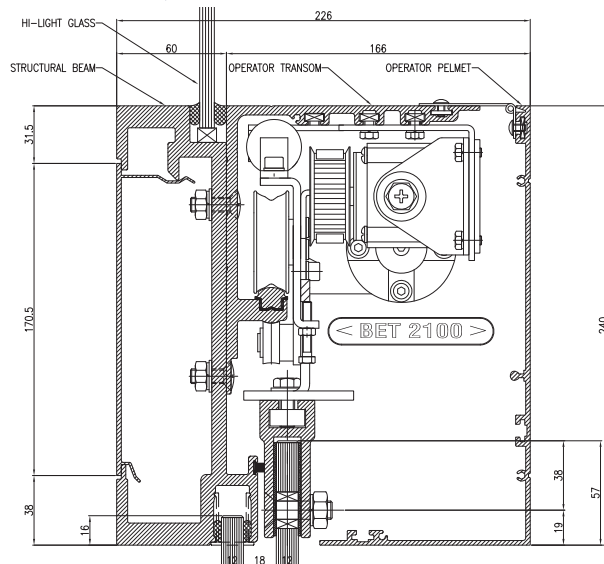
## FRAMED AND GLAZED ALUMINIUM, TIMBER OR STEEL SLIDING DOORS



## SLIMLINE NARROW STILE FRAMED AND GLAZED SLIDING DOORS



## FRAMELESS TOUGHENED GLASS SLIDING DOORS OPTIONAL: UNIQUE STRUCTURAL BEAM AND BACKLIT SIGNAGE



### ARCHITECTURAL SPECIFICATION

Automatic sliding door operator shall be BET2100 bi-parting/single type, fully compliant and accredited to AS5007, as supplied and installed by Byrnes Entrance Technology Pty Ltd, Tel: (02) 9531 5559 Email: info@byrneset.com.au

**General description:** The drive control system shall consist of a robust DC motor with a programmable digital controller for position sensing of doors by a non-contact distance measuring system which drives a toothed reinforced high performance type belt for silent and service free operation (chain not acceptable). Doors shall be precisely controlled for slow down of door movement. (Limit switches not acceptable).

Door functions, safety and security settings can be adjusted using a hand held programmer.

The opening and closing speeds are individually adjustable; bi-parting door opening speed and closing speeds are adjustable up to 100cm per sec and single door opening speeds are adjustable up to 50cm per sec.

When first switched on and upon activation, the door operator shall adjust to its opening and closing positions.

Door track shall be hard-anodised aluminium replaceable heavy duty type. Door carriages shall be equipped with track rollers of no less than 55mm diameter, moulded on high quality ball bearings and with adjustable door hangers and up-thrust rollers.

**Door control functions:** Selected via BET2100 Door function switch:  
NIGHT – Door(s) remain closed. If electric lock is fitted; door(s) closed and locked.

EXIT – Door(s) operate automatically only via actuation devices inside.

AUTO – Door(s) operate automatically via actuation devices both sides.

HOLD – Door(s) stay in the hold open position.

**Safety:** In-built automatic safety reversing function to ensure automatic reversing of door(s) if obstructed in either direction. Also select one or more of the following additional AS5007 mandatory safety devices:

BET/20 Dual Photo-electric safety beams, sun resistant type, one set at 200mm and other set at between 600mm to 1000mm from floor level.

BET/04 Safety presence sensor, surface mounted or BET/04/ECA for ceiling cavity mounting.

BET/07 or BET/08 Combined motion and safety sensor, surface mounted or BET/08/ECA for cavity ceiling mounting.

BET/MA Electric Floor Mat Switches, fully hermetically moulded, surface or recessed mounted, colour black.

**Failsafe:** If mains power failure occurs and a mechanical lock is NOT engaged, door(s) will operate open for emergency egress and will automatically reset upon mains power resumption. If BET2100 Electric lock is fitted, the same function will apply when in AUTO mode and doors will remain locked in NIGHT mode until activated by switch.

**Failsecure:** If mains power failure occurs and BET2100 Electric lock is fitted, door(s) will remain locked until activated open via switch from inside for a preset time then close and lock.

**Electric lock (Optional):** The operator shall include a BET2100 Electric lock (electro-mechanical type).

**Power:** 240VAC, 50Hz, 10amp single-phase power point (by others), above left hand side of door operator.

**Ambient operating temperatures:** -20 to +50 degrees Celsius.

**Door Activation:** Specifier to select as required:

- BET/02 MOTION SENSOR, transom or pelmet surface mount or BET/02/EAC ceiling mount.
- BET/03 MOTION SENSOR, transom or pelmet surface mount.
- BET/04 SAFETY PRESENCE SENSOR, transom or pelmet surface mount or BET/04/EAC ceiling mount.
- BET/05 NON-TOUCH PROXIMITY SENSORS, wall mount.
- BET/07 COMBINED MOTION AND SAFETY SENSOR, wall mount.
- BET/08 COMBINED MOTION AND SAFETY SENSOR, transom or pelmet surface mount or BET/08/EAC ceiling mount.
- BET/MA ELECTRIC FLOOR MAT SWITCHES, surface or recessed floor mount, hermetically sealed.
- BET/13 WIRELESS TOUCH SWITCH, wall mount.
- BET/14 EXIT PUSH BUTTON SWITCH, narrow stile, mullion mount.
- BET/15 EXIT PUSH BUTTON SWITCH, ILLUMINATED BUTTON.
- BET/16 KEYSWITCH, impulse type, wall, column or mullion mount.
- BET/16/LIW KEYSWITCH, impulse or two position, wall or mullion mount.
- BET/17 DIGITAL CODEPAD SWITCH, wall mount.
- BET/18 DIGITAL CODEPAD SWITCH (VANDAL RESISTANT), wall mount.
- BET/20 PHOTO-ELECTRIC BEAMS, flush mullion mount.
- BET2100/DFS DOOR FUNCTION SWITCH, standard width, wall mount.
- BET2100/DFS/N DOOR FUNCTION SWITCH, narrow stile, mullion mount.
- BET2100/ATD/ENTRY and BET2100/ATD/EXIT ACCESSIBLE TOILET CONTROL PANELS, refer to BET2100/ATD specification.

**Compatibility:** BET2100 Door operator is compatible with access control systems, intercom systems, fire alarm systems, security alarm systems, card readers and other activation equipment.

**Proprietary Item supplied by: Byrnes Entrance Technology Pty Ltd**

Tel: (02) 9531 5559 Email: info@byrneset.com.au



# Byrnes Entrance Technology

Formerly FRB Industries established 1981

CELEBRATING OVER 30 YEARS OF EXCELLENCE

[www.byrneset.com.au](http://www.byrneset.com.au)



PROUDLY  
Australian Owned

## DESIGN AND TECHNICAL ADVICE

Byrnes Entrance Technology (BET) has an extensive range of automatic doors, gates and pedestrian and vehicular entrance systems to provide the best possible solution for your project. Ask your BET representative about the BET product range and application possibilities – it's all part of our commitment to provide the best possible design advice to architects, specifiers, builders and customers.

## CUSTOMER SERVICE

BET provides a complete sales and service package. Our service department is stocked with genuine service parts and our fully trained and accredited service technicians are equipped with the very latest diagnostic equipment to ensure prompt and efficient service to our valued customers.

BET Service – our service technicians are ready to provide 'on demand' service to your installed equipment, during normal working hours or after hours, if an emergency occurs.

BET Programmed Preventative Maintenance – to maintain continued peak performance of your installed equipment, to avoid unnecessary 'down time' and inconvenience and to meet AS5007 requirements, we recommend a BET preventative maintenance programme that best suits the equipment usage and your needs. Select from the following programmes:

BET PROGRAMME	DESCRIPTION
<b>SUPERIOR</b> Comprehensive labour and parts.	COMPREHENSIVE LABOUR AND PARTS: Includes all labour costs for scheduled maintenance and service calls during normal hours and costs of replacement service parts for the duration of the programme.
<b>PREMIUM</b> Comprehensive labour.	COMPREHENSIVE LABOUR: Includes all labour costs for scheduled maintenance and service calls during normal hours for the duration of the programme.
<b>ECONOMY</b> Scheduled preventative maintenance labour.	SCHEDULED LABOUR: includes labour costs for scheduled maintenance during normal hours for the duration of the programme.

Maintenance frequency is quarterly (4 times per year) in accordance with AS5007-2007.

BET customer service is on call 24 hours 7 days a week, ready to respond to your needs.

Contact BET to arrange service calls and a preventative maintenance programme to best suit your needs.

## BREIF RESUME OF BET 2100 SLIDING DOOR OPERATOR INSTALLATIONS

Bankstown TAFE, NSW.

Chelsea Apartments, Waitara, NSW.

Canley Vale Hotel, NSW.

Dee Why Grand, NSW.

Engadine Library, NSW.

Erindale Centre, ACT.

Hornsby Hospital, NSW.

Parliament House, Sydney, NSW.

Pittwater Retirement Village, NSW.

Redlands RSL, QLD.

Shoalhaven Ex-Services Club, NSW

Sushi Train, Miami, QLD.

SRBC, Yeerongpilly, QLD.

Rockdale Plaza, NSW.

Texas Hospital, QLD.

---

**BYRNES ENTRANCE TECHNOLOGY PTY LTD** ABN 36 099 717 067  
[info@byrneset.com.au](mailto:info@byrneset.com.au) | [www.byrneset.com.au](http://www.byrneset.com.au)

### New South Wales

Unit 4, 15-21 Bay Road  
Taren Point NSW 2229  
PO Box 2878  
Taren Point NSW 2229  
Tel: 02 9531 5559  
Fax: 02 9531 5551

### Queensland

Unit 14, 37 Blanck Street,  
Ormeau QLD 4208  
Tel: 07 5549 2236  
Fax: 07 5549 2099

### Australian Capital Territory

Unit 3, 55 Tennant Street,  
Fyshwick ACT 2609  
PO Box 555  
Fyshwick ACT 2609  
Tel: 0401 142 517